



2020 International Prospectus

Auckland | Hamilton | New Zealand
nzse.ac.nz | +64 9 827 6100

About NZSEG	3
Why choose New Zealand	4
Why choose NZSE	4
Our Credentials and Memberships	4
Technology	5
• Technology Pathways	5
• Information Technology (Level 5)	6
• IT Technical Support (Level 5)	7
• Software Development (Level 6)	8
• Networking (Level 6)	9
Business	10
• Business Pathways	10
• Business (Level 5)	11
• Business (Level 6)	12
University Prep	13
• University Prep Pathways	13
• Foundation Skills (Level 3)	14
• University Preparation (Level 4)	15
Healthcare	16
• Healthcare Pathways	16
• Healthcare (Level 7)	17
Student and Career Support	18
Code of Practice	19
Student Visa and Insurance	19
Seafield School of English	20
• Why choose Seafield	22
• About Auckland	23
• English Language (Level 3)	24
• English Language (Level 4)	25
• General English/IELTS/Migrant English	26
• Timetable	26
• Student Activities	27

OUR MISSION

To produce successful graduates through exciting educational experiences.

OUR VISION

Transforming lives through the power of learning.

1st



New Zealand is ranked top country to study abroad and 1st in the world in preparing students for the future.

2nd in peacefulness

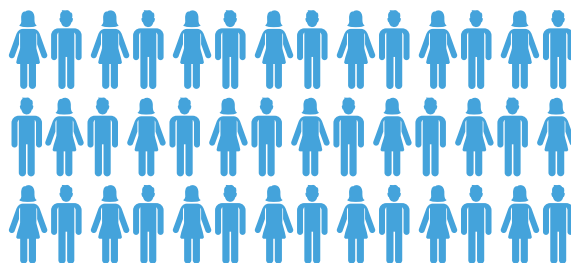


New Zealand ranked the second most peaceful country on Earth - 2019 Global Peace Index

Ranked top 3%



New Zealand is globally placed top 3% in Tertiary Education.



53,000

 International students in New Zealand.

Source: www.educations.com, 2019

Kia ora, hello, welcome.

New Zealand Skills and Education Group (NZSEG) is an education group comprised of two top quality private training establishments: New Zealand School of Education (NZSE) and Seafield School of English. We offer learning across an array of differing programmes and disciplines, for both domestic and international students.

Headquartered in Auckland, New Zealand, NZSEG has campuses throughout the wider Auckland and Waikato regions. We offer a range of programmes designed for individuals seeking further studies, or acquiring industry relevant skills and employment pathways. At NZSEG, we not only ensure that our students benefit from technical and theoretical knowledge but are also equipped with the soft skills required to get them job ready to enter New Zealand's workforce confidently.

We take pride in having two NZQA Category 1 private training establishments that deliver accredited, industry-relevant, and rewarding education programmes. We strive to provide a nurturing and supportive environment where you can uncover your potential and work towards your preferred career or undertake further studies.

At NZSEG we are guided by our belief in the transformative power of education and our commitment to offering exceptional support and care to our international students in an exciting educational environment. We pride ourselves on providing employment assistance to our students – helping them in gaining part-time positions while they study with us and skills they require to gain full time roles as graduates.

We look forward to meeting you when you arrive at any of our campuses and supporting you on the journey towards attainment of your chosen qualifications.

The New Zealand Skills and Education Group operate:

NZSE

NZSE is a leading provider of tertiary qualifications in Business, Early Childhood Education, Healthcare, Information Technology, Military Preparation, Retail, Security, and University Preparation. We have modern campuses in New Lynn, Avondale, Manukau, central Auckland and Hamilton.

Whichever study and career path you choose you will be in safe hands. Student welfare is our priority and we aim to deliver practical experiences, connections into industry and internationally recognized qualifications.

Our tutors and staff work hard to meet the needs of all students and have high expectations for your success. We are guided by principles that encompass a respect for all cultures, knowledge and diversity.

Our tutors seek to mentor and guide you to learn, understand and prepare for life and work in a multicultural world. And, our academic programmes aim to prepare you for a seamless transition into university degrees while our applied learning programmes train you to enter the New Zealand or global workforce with confidence.

Seafield

SCHOOL OF ENGLISH

Since 1982, we have been providing English language courses to international students from around the world, earning a reputation for fun and diverse learning experiences. We hold a category one status and are a specialist English language school offering General English courses, IELTS and LanguageCert preparation classes, and NZ Certificate in English Language which opens the way to higher studies in mainstream programmes.

Why choose New Zealand

New Zealand is one of the world's best places to live and study. Discover our internationally-renowned education system and unbeatable lifestyle. New Zealanders have a welcoming nature and an easy going attitude. A peaceful country, with a low crime rate, the two islands forming New Zealand are blessed with a natural beauty second to none, offering an amazing quality of life and work life balance. We are based in two major NZ cities: Auckland and Hamilton.

Auckland has been rated the third best city in the world in a recent survey measuring global quality of life. The annual report by Mercer is based on factors such as culture and environment, political stability, safety, infrastructure and ease of doing business. Auckland is a cosmopolitan hub of activity and business and is one of the most multicultural cities on the planet.

Hamilton is at the centre of one of the richest agricultural and pastoral areas in the world and is a major service centre for the Waikato region. Hamilton has a diverse economy and is the third fastest growing urban area in New Zealand. Education and research and development play an important part in Hamilton's economy, as the city is home to over 40,000 tertiary students. Hamilton's central business district is a bustling retail precinct with vibrant entertainment areas.

Why choose NZSE?

NZQA Accredited
Category 1 Education
Provider

5 Campuses
Auckland and Hamilton

6+
University
Pathways

30+
Industry Focussed
Programmes

25+
Industry Partnerships
with Leading New Zealand
Companies

Career Support and
Pastoral Care

Our Credentials

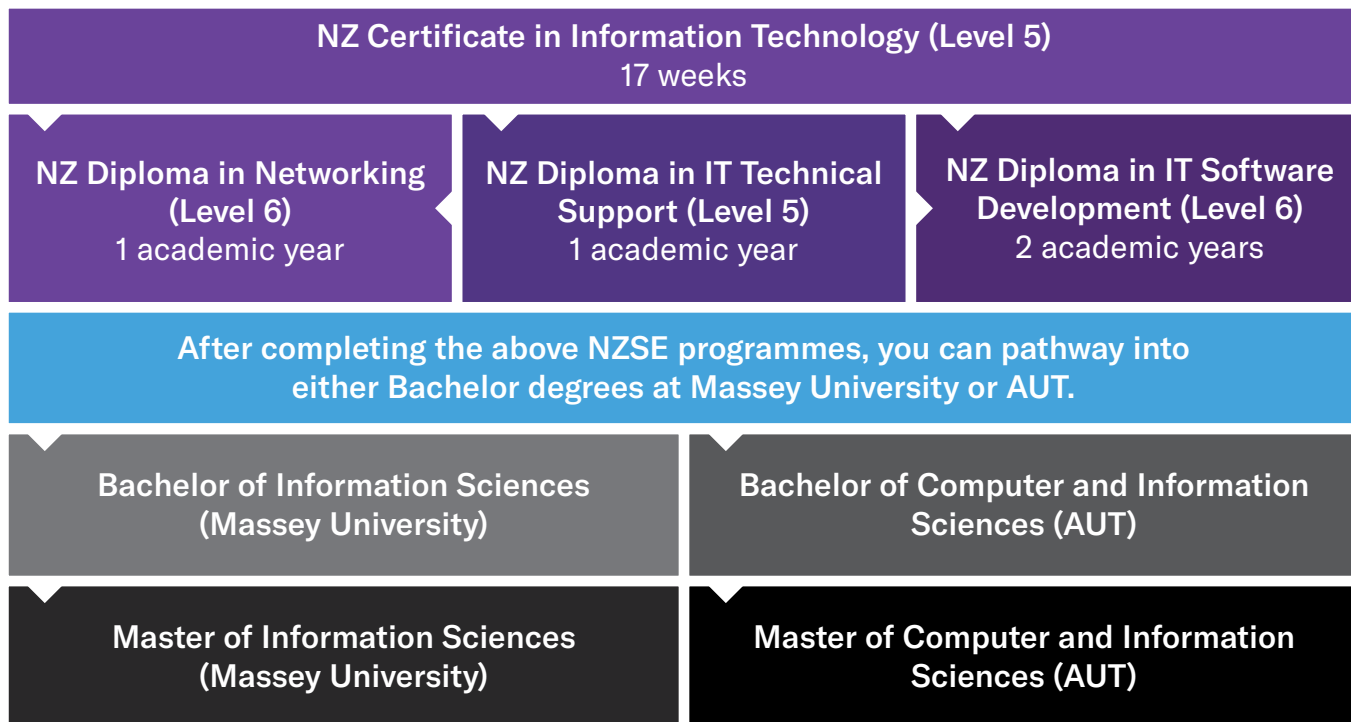


Our Memberships



Technology

Everyone relies heavily on technology and it's a critical part of all businesses infrastructure. The demand for competent analytical problem solvers is growing exponentially and the careers available in the ICT industry are the most progressive and varied.



AUT is the second largest university in New Zealand with campuses serving major parts of Auckland and an specialized high-performance sports institute. AUT has an excellent reputation for design, science, technology and research and has tech facilities that rival industry those in industry.



For more than 80 years, Massey University has helped shape the lives and communities of people in New Zealand and the world through its forward-thinking spirit, teaching, and research led methodology.

Our Industry Partners



Technology

New Zealand Certificate in Information Technology (Level 5)

Duration	17 weeks
Campus	Auckland
Credits	60 credits

This programme provides the core to pathway into all of our higher qualifications in Information Technology or help get you into the industry. Understand hardware inside out. Become familiar with software and its development life cycle and start designing practical IT solutions for real-world problems.

Entry Requirements

Academic Criteria

- Open entry to students with interview
- Preference will be given to students with qualifications in Information Technology Level 3/4 and above, and/or NCEA level 2/3 OR overseas high school certificate.

English Criteria

- IELTS Academic score of 5.5 with no band less than 5.0 or NZCEL Level 4 - General qualification or other NZQA approved criteria.

What Will I Learn?

- Technical Infrastructure for Today
- Visual Programming
- Technology in the Digital World
- Business Technologies

International Certifications

This programme prepares students towards the following certifications:

- CompTIA A+
- Cisco CCENT
- ITIL Foundation

What's Next?

Study Further

- NZ Diploma in IT Technical Support (Level 5)*
- Diploma in IT Software Development (Level 6)*

Get Employed

- Help Desk Technical Support
- Junior Administrator Assistant
- Network Configuration Assistant
- Computer and Tech Repair Technician
- Hardware Support Technician
- A variety of entry level roles in IT industry



“My study with NZSE was practical and fun and allowed me to transition into a Bachelor of Computer and Information Science degree at AUT University that I completed in just two and a half years.”

Jia Lu

AUT PhD Candidate

AUT Master in Computer and Information Sciences

Graduate of Diploma in IT Software Development (Level 6)

*Conditions apply - go to our website or get in contact with us to discuss

Technology

New Zealand Diploma in Information Technology Technical Support (Level 5)

Duration	1 academic year
Campus	Auckland
Credits	120 credits

Switched-on problem solvers are in constant demand across the ICT sector. As technology continues to make its way into every aspect of modern life, businesses will require more skilled IT professionals who're capable across a wide range of technical troubleshooting scenarios.

Entry Requirements

Academic Criteria

- Open entry to students with interview
- Preference will be given to students with qualifications in Information Technology Level 3/4 and above, and/or NCEA level 2/3 OR overseas high school certificate.

English Criteria

- IELTS Academic score of 5.5 with no band less than 5.0 or NZCEL Level 4 - General qualification or other NZQA approved criteria.

What Will I Learn?

- Technical Infrastructure For Today
- Visual Programming
- Business Technologies
- IT Service Provision
- Technology in a Digital World
- Hardware and Application Administration
- Computer Network Principles
- Operating Systems

International Certifications

This programme prepares students towards the following certifications:

- CompTIA A+
- Cisco CCENT
- ITIL Foundation

What's Next?

Study Further

- Diploma in IT Software Development (Level 6)*
- NZ Diploma in Networking (Level 6)

Get Employed

- Technical Support/Help Desk
- Telecommunications Technician
- Application Support Technician



Technology

Diploma in Information Technology Software Development (Level 6)

Duration	2 academic years
Campus	Auckland
Credits	285 credits

Learn the fundamentals of information systems, hardware and software infrastructure, user applications and communication. Deep-dive into theory and practice on a range of computing systems and networks, and how these systems are used to support business practices. This programme also embeds the New Zealand Diploma of Software Development (Level 6).

Entry Requirements

Academic Criteria

- A computing certificate in Level 5 or equivalent knowledge, skills and experience OR overseas high school certificate.

English Criteria

- IELTS Academic score of 6.0 with no band less than 5.5 or NZCEL Level 4 - Academic qualification or other NZQA approved criteria.

What Will I Learn?

- Technical Infrastructure For Today
- Visual Programming
- Business Technologies
- Technology in a Digital World
- Programming 1
- Programming 2
- Interface Design and User Experience
- Communication Skills
- Mathematical Concepts
- Computer Network Principles
- IT Project Management
- Logical Database Design
- Physical Database Design
- Program Design and Construction
- Software Testing
- Software Development Practice
- Business and Process Modelling
- IT Service Provision
- Mobile and App Development
- Game Programming

International Certifications

This programme prepares students towards the following certification:

- Microsoft Technology Associate Developer

What's Next?

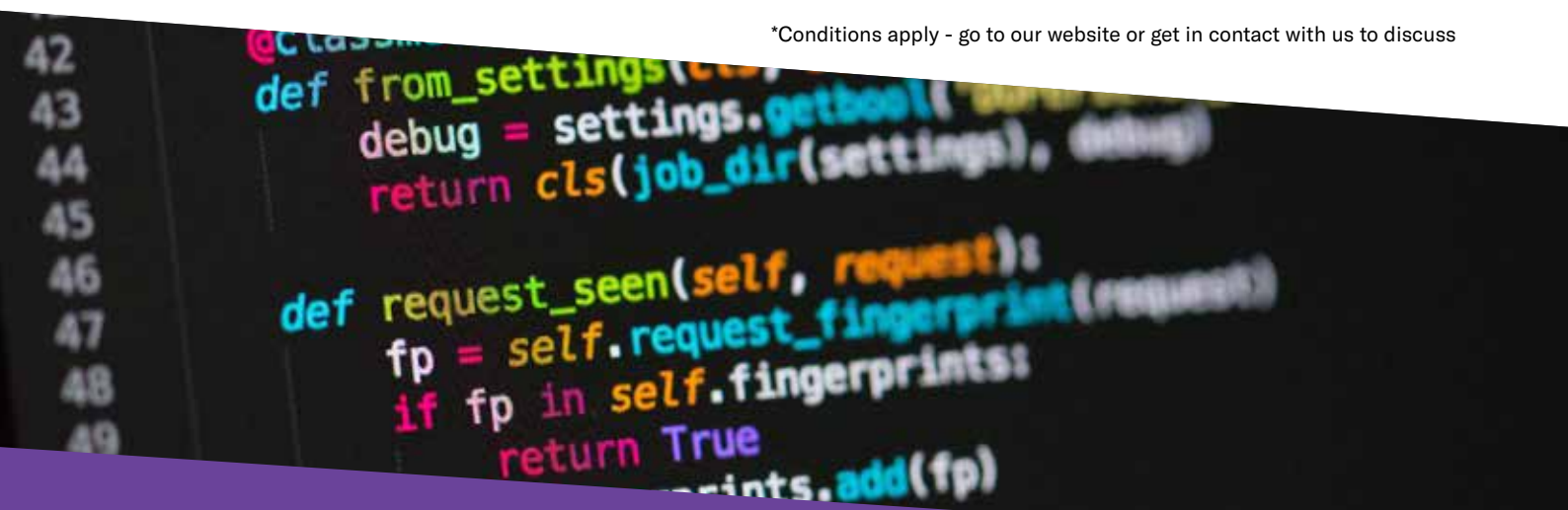
Study Further

- Bachelor of Computer and Information Sciences (AUT)*
- Bachelor of Information Sciences (Massey University)*

Get Employed

- Software Testing
- Front End Developer
- Back End Developer
- Computer Systems Administrator

*Conditions apply - go to our website or get in contact with us to discuss



Technology

New Zealand Diploma in Networking (Level 6)

Duration	1 academic year
Campus	Auckland
Credits	120 credits

Be immersed in the field of networking and gain a thorough understanding of planning, configuring, deploying, testing and maintenance on a variety of platforms.

Entry Requirements

Academic Criteria

- Preference will be given to students with qualifications in Information Technology Level 5 and above, OR equivalent knowledge, skills and experience.

English Criteria

- IELTS Academic score of 6.0 with no band less than 5.5 or NZCEL Level 4 - Academic Qualification or other NZQA approved criteria.

What Will I Learn?

- Computer Network Applications
- Networking and System Administration
- Cloud Computing
- I.T. Infrastructure and Planning
- Network Security
- ICT Project Management
- I.T. Project

What's Next?

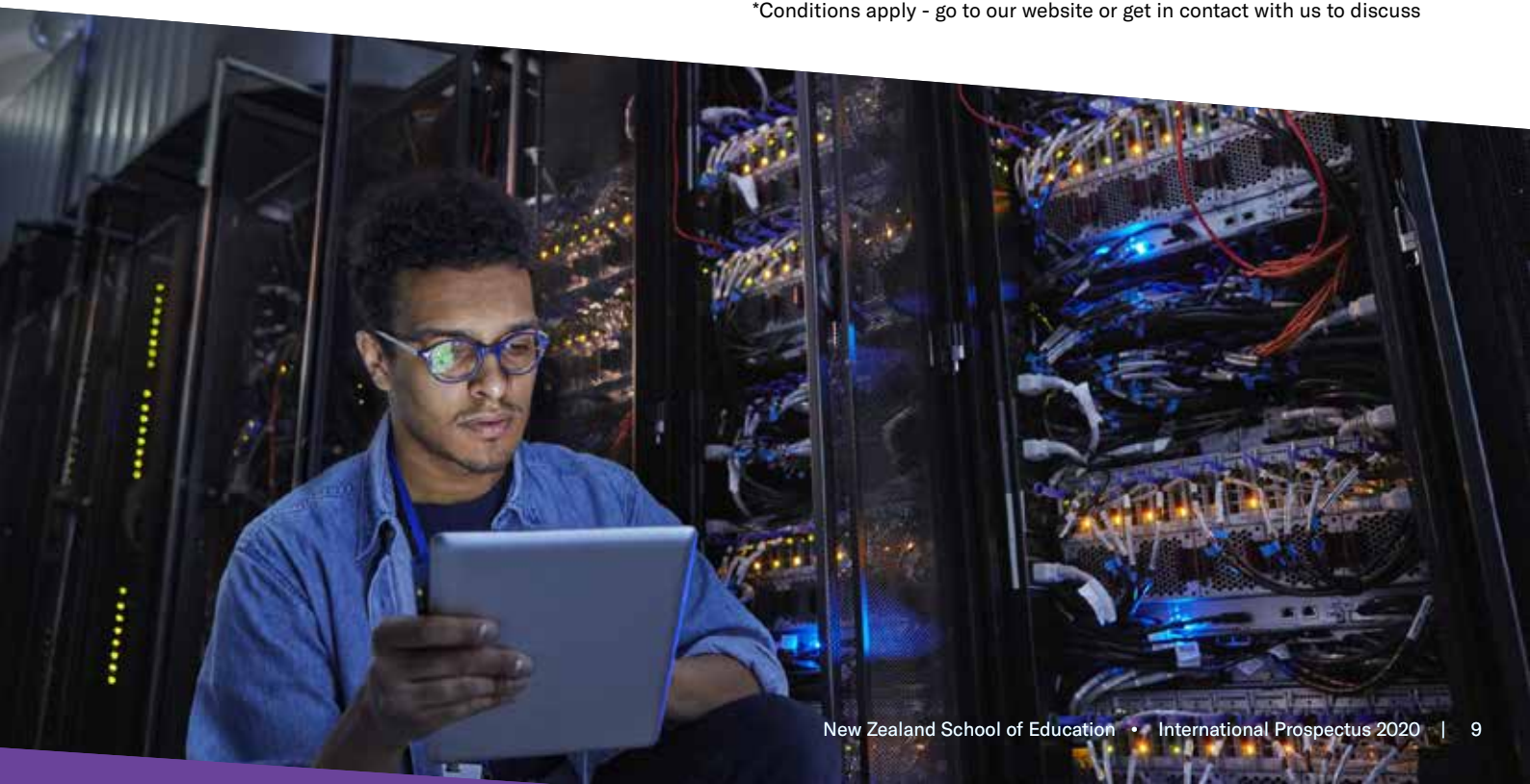
Study Further

- Bachelor of Computer and Information Sciences at Auckland University of Technology*
- Bachelor of Information Sciences at Massey University*

Get Employed

- Network Technician
- Network/System Administrator
- IT Security Support Technician
- Technical Support Technician
- Networking/System Administrator

*Conditions apply - go to our website or get in contact with us to discuss



Business

NZSE will provide you the skills and knowledge to really understand the world of business. You'll gain insights and connections that will enable you to transition into employment or higher studies across a wide range of sectors and roles. Our exceptional academic staff will inspire and mentor you to think creatively and critically, build your analytical skills and shape your strategic thinking ability. Practical hands-on delivery grounded in a theoretical context gives our students all they need to succeed in all types of employment landscapes.

NZ Diploma in Business (Level 5)
1 academic year

NZ Diploma in Business (Level 6)
1 academic year

Bachelor of Business Studies
(Massey University)*

*Conditions apply - go to our website or get in contact with us to discuss



For more than 80 years, Massey University has helped shape the lives and communities of people in New Zealand and the world through its forward-thinking spirit, teaching, and research led methodology.



“The tutors and Student Support team showed a genuine desire to help us achieve our goals. I’m now using the knowledge I learned in my new job”

Alisha Rodrigues

Assistant Company Secretary at
TMF Corporate Services

Graduate of New Zealand Diploma in Business

Our Industry Partners



Business

New Zealand Diploma in Business (Level 5)

Duration	1 academic year
Campus	Auckland
Credits	120 credits

This programme aims to equip students with transferable skills that are internationally valued. It is geared towards industry standards and opens the door for students to pathway into further education or to apply themselves in many varied businesses and roles.

Entry Requirements

Academic Criteria

- High School Certificate preferred
- OR a Business Certificate in Level 3 or equivalent knowledge, skills and experience.

English Criteria

- IELTS Academic score of 5.5 with no band less than 5.0 or NZCEL Level 4 - General qualification or other NZQA approved criteria.

What Will I Learn?

- Communication for Business
- Management and Organisational Performance
- Fundamentals of Accounting
- Introduction to Marketing
- Change Management
- Human Resources Management
- Introduction to Leadership and Teamwork
- Operations Management

What's Next?

Study Further

- NZSE Diploma in Business (Level 6)
- Bachelor of Business Studies at Massey University*
- Higher level Studies at Level 7 and above

Get Employed

- Office Administration Support
- Assistant roles
- Custom Service roles
- Entry level Sales and Marketing roles

*Conditions apply - go to our website or get in contact with us to discuss



Business

New Zealand Diploma in Business (Level 6)

Duration 1 academic year
Campus Auckland
Credits 120 credits

This programme prepares students to develop leadership, problem solving and decision-making skills in the field of business administration and operation in a multi-cultural environment in the New Zealand business context.

Entry Requirements

Academic Criteria

- A Business Level 5 Diploma qualification or equivalent is preferred.

English Criteria

- IELTS Academic score of 6.0 with no band less than 5.5 or NZCEL Level 4 - Academic Qualification or other NZQA approved criteria.

What Will I Learn?

- Programme Description
- Professional Workplace Communication
- Management and Organisational Performance
- Accounting Framework
- Marketing Perspective
- Implementing and Leading Change
- Managing Human Resource
- Applied Leadership and Teamwork
- Applied Operations Management

What's Next?

Study Further

- Bachelor of Business Studies at Massey University*
- Higher level Studies at Level 7 and above

Get Employed

- Personal Assistant roles
- Executive Assistant roles
- Office Administration and Support roles
- Junior Sales and Marketing roles
- Junior Project Management roles

*Conditions apply - go to our website or get in contact with us to discuss



University Preparation

Missed out on University Entrance? Our foundation courses can help you prepare for higher studies or to be work ready.

NZ Certificate in Foundation Studies
(Level 3)
17 weeks

NZ Certificate in University Preparation
(Level 4)
17 weeks

After completing the above NZSE programmes, you can pathway into either our level 5 programmes or Bachelor degrees at Massey University or AUT.

Level 5+ programmes at NZSE

Bachelor Degrees at AUT or Massey University*

*Conditions apply - go to our website or get in contact with us to discuss



AUT is the second largest university in New Zealand with campuses serving major parts of Auckland and an specialized high-performance sports institute. AUT has an excellent reputation for design, science, technology and research and has tech facilities that rival industry those in industry.



For more than 80 years, Massey University has helped shape the lives and communities of people in New Zealand and the world through its forward-thinking spirit, teaching, and research led methodology.



“The tutors and student support team gave me essential skills and confidence to succeed at university and the positive learning environment enabled me to put my best foot forward.”

Vincent Diamond

Performing Artist

Graduate of New Zealand Certificate in Foundation Studies (Level 3)

University Preparation

New Zealand Certificate in Foundation Studies (Level 3)

Duration	17 weeks
Campus	Auckland
Credits	60 credits

Our Level 3 Foundation course provides you with a 17 week programme of study in academic skills, with a strong focus on introducing students to the requirements of academic study at a tertiary level.

Entry Requirements

Academic Criteria

- Open entry to students who are 16 years of age or older.

English Criteria

- IELTS Academic score of 5.5 or equivalent with no band less than 5.0 or NZCEL Level 4 - General qualification or other NZQA approved criteria.

What Will I Learn?

- Develop communication skills
- Problem solving and decision making skills
- Become comfortable with the use of digital technology for academic purposes
- Develop goal setting and study strategies

What's Next?

Study Further

- NZ Certificate in University Preparation (Level 4)
- Pathway in to higher studies at NZ institutes and universities*

Get Employed

- Entry role jobs in a variety of areas

*Graduates of the NZ Certificate of Foundation Studies (Level 3) are not guaranteed university entrance after completion. This programme is to help students prepare for tertiary education.



University Preparation

New Zealand Certificate in University Preparation (Level 4)

Duration	17 weeks
Campus	Auckland
Credits	60 credits

The Level 4 Certificate follows on from the Level 3 qualification and is a gateway programme for students to successfully pathway into university with a focus on literacy and numeracy.

Entry Requirements

Academic Criteria

- New Zealand Certificate in Study and Career Pathways Level 3 or equivalent.

English Criteria

- IELTS Academic score of 5.5 or equivalent with no band less than 5.0 or NZCEL Level 4 qualification or other NZQA approved criteria.

What Will I Learn?

- Use digital technology and a variety of resources to locate, identify and analyse information
- Introduction to statistics and data
- Develop collaborative, team and personal skills
- Project-based learning
- Provides essential skills and confidence to succeed in higher studies

What's Next?

Study Further

- Any Level 5 programme at NZSE
- Bachelor degrees at Massey University and Auckland University of Technology*
- Pathway in to higher studies at NZ institutes and universities*

Get Employed

- Entry role jobs in a variety of areas

*Graduates of the NZ Certificate of University Preparation (Level 4) are not guaranteed university entrance after completion. This programme is to help students prepare for tertiary education.



Healthcare

Quality healthcare is crucial to a nation's welfare. The opportunities for trained professionals in New Zealand's rewarding healthcare industry are continuously expanding due to our growing elderly population. Designed to provide students with the theory and skills required to be a part of this industry, our programme empowers our learners to achieve their career goals successfully. Train to become a valuable part of a quality healthcare system.

Diploma in Community Healthcare and Support (Level 7)

1 academic year

Employments
opportunities in
Healthcare sector

Higher level studies
at NZ universities*
*conditions apply

Professional
registration

*Conditions apply - go to our website or get in contact with us to discuss

Pay equity for New Zealand Healthcare workers

There are pay incentives when you study healthcare for care and support workers. Complete our healthcare diploma and receive the minimum wages equivalent to Level 4 qualifications assessed by Careerforce. For more information, please visit www.health.govt.nz and search "pay equity."



"The course allowed me to explore my interests with the guidance of tutors and provided me with an amazing foundation to upgrade my skills and knowledge."

Anjalín Anthony

Current role: Healthcare Teacher

Graduate of Community Healthcare and Support (Level 7)

Our Industry Partners



OCEANIA
HEALTHCARE



Healthcare

Diploma in Community Healthcare and Support (Level 7)

Duration	1 academic year
Campus	Auckland and Hamilton
Credits	120 credits

This programme provides students with the required skills and competencies for future work and career opportunities within the specialised field of the New Zealand healthcare industry. With a significant work placement at the end of the programme, graduates will be work ready and able to apply specialised and technical knowledge and skills in palliative and aged care, rehabilitation, health promotion and primary health care.

Entry Requirements

Academic Criteria

Minimum of Level 5 Diploma in Health or associated field AND one year work experience OR a level 6 diploma and above of any discipline.

English Criteria

- IELTS Academic score of 6.0 with no band less than 5.5 or NZCEL Level 4 - Academic qualification or other NZQA approved criteria.

What Will I Learn?

- Primary Health Care
- Rehabilitation
- Professional Practice and Legislation
- Research for Health Care Practice

- Geriatric Care
- Palliative Care – Tiakina Maioha

► **Industry Work Placement**
with one of our industry partners

Additional Certifications

NZQA certification in First Aid and Hoist Training

What's Next?

Study Further

- Higher level studies in health related subjects at New Zealand universities*
- Industry registration pathway opportunities

Get Employed

- Community Health Worker
- Health Educator
- Whanau Support Worker
- Healthcare/Nursing
- Support Worker
- ACC Case and Claims Officer
- Health Promotion Officer

- *Graduates of the Diploma in Community Health Care and Support (Level 7) may be eligible for entry into a variety of further tertiary programmes relating to this field of study.

Complete the
Diploma in Community
Healthcare and Support
(Level 7)

Earn at least
\$25.50*
an hour

*Correct at time of printing

New Zealand's ageing population is steadily increasing creating a demand for trained community workers and caregivers.

“Currently there are around 725,000 people aged over 65. By 2036 there will be more than 1.2 million people 65 or older. Combined with the low birth rate, this means seniors will make up almost a quarter of the total population.”

- NZ Government Minister Tracey Martin (April 2018)

Student Support at NZSEG

Pre-Arrival Advice and Information

Leaving home can be difficult as much as it is exciting, and we understand your need and will provide support and assistance before you get here. We have valuable information and advice on our website so you can have a smooth and hassle free transition to your higher studies.

Orientation

Our comprehensive orientation program is designed to welcome you and give you essential information so you can navigate your new environment, stay safe and succeed in your academic journey with us.

Social Activities

In addition to their academic support, students are encouraged to make new friends with other students and enjoy a healthy social life.

Pastoral Care

Embracing the diversity of our students, our friendly and approachable student support team is always available to our students to help them achieve their goals, both inside and outside of class.

Career Services



Career Advisor - David Sharples

Our team vision is to support you in unlocking your career potential. We do this by helping you navigate your education and career journey through:

- One-on-one career coaching, including help and advice for your transition into part-time, fulltime and casual employment
- Targeted employability workshops to fine tune your job ready skills
- Connecting you (students or graduates) with employers and industry for the latest labour market information

Today's employers and businesses look for job ready individuals who can communicate, problem-solve and put their learned knowledge into action quickly and responsibly.

We are committed to helping you have a competitive edge on your career journey and ensure you can transition in today's world with the job ready skills and experience employers are looking for.





Seafield
SCHOOL OF ENGLISH

Insurance

International students must have appropriate and current medical and travel insurance while studying in New Zealand. We can purchase your International Student Travel Insurance through our approved partner Southern Cross. Approximate cost (as at 2019): \$633 per year (pro-rata).

Student Visa Work Rights

International students enrolled in full time study with NZSE are allowed to work part-time for up to 20 hours a week and full-time during all scheduled holidays.

International students enrolled in full time study for at least 14 consecutive weeks or more with Seafield School of English can work part time during the period of their studies.

Visit www.immigration.govt.nz for more information.

Code of Practice

We at NZSE and Seafield have agreed to observe and be bound by the New Zealand Government's Education (Pastoral Care of International Students) Code of Practice.

You can read more on our website,
www.nzse.ac.nz/international-enrolment/code-of-practice

Seafield

SCHOOL OF ENGLISH



Category 1

Seafield School of English is a NZQA Category One accredited education provider and part of the New Zealand Skills and Education Group.

We are looking forward to meeting you

Seafield is based in the vibrant and exciting city of Auckland and offers a wide variety of English courses for all levels. We are committed to helping you achieve your linguistic objectives while making sure that your learning journey with us is also an enjoyable and culturally interesting experience.

Our expert tutors will ensure that you can learn at your own pace in our student-centred environment where you can focus on improving your English language ability.

Whether you require General English, Certificate in English Language, LanguageCert exam preparation and IELTS exam preparation course for higher studies, we can deliver a course that takes you wherever you want to go.



Why choose Seafield?

▶ Category One Provider	▶ Approved LanguageCert (ESOL) Testing Centre
▶ Study pathways to universities and other programmes	▶ Part-time work rights
▶ One-on-one tutoring	▶ Flexible class timings
▶ After school activities	▶ Student Support Team who can speak a variety of language

We foster and celebrate a school environment where students feel accepted and supported. With readily available information on study resources as well as everything you need to know about living and studying English in Auckland – one of the most liveable cities in the world – Seafield ensures that your academic journey is a rewarding one. We believe that satisfied and happy students who challenge themselves to grow in every area, not just academically, will excel and succeed in life.

We offer our programmes in the heart of Auckland CBD. Professional teachers, small classes and plenty of individual attention are certainly features of our school, but it's more than that. It's our school's welcoming atmosphere, the many international friendships made, and the caring and professional environment which sets Seafield apart. We are a school that students remember fondly and recommend to others.





About Auckland

Auckland has been rated the third best city in the world in a recent survey measuring global quality of life. The Annual Report by Mercer is based on factors such as culture and environment, political stability, safety, infrastructure and ease of doing business.

There is a great variety of restaurants, hotels, fast food outlets and a number of 24 hour supermarkets. Overall Auckland is an ideal environment for learning and personal development and provides a diverse range of things to see and do.

Seafield

New Zealand Certificate in English Language - General (Level 4)*

*Programme pending approval

Duration 17 weeks
Campus Auckland

Our Level 4 General programme provides students with the language competency in academic contexts for Level 5 tertiary study as well as basic workplace and life use. It sets out to advance the students' skills in speaking, listening, reading, writing and study skills that will enable them to handle a range of general contexts for living in Aotearoa New Zealand.

Entry Requirements

- Be 16 years old by the time the programme starts

What Will I Learn?

- Learn how to listen, read, write and speak in English in general contexts
- Get the language and study skills to succeed in study, employment and life
- Learn in a fast and flexible 17 week programme
- English language scholarships available

What's Next?

Study Further

- NZSE Diploma in Business Level 5
- NZSE Diploma in IT Technical Support Level 5
- NZSE Certificate in Uni Prep Level 4
- Any other Level 5 diplomas in NZ institutes



“The best thing about Seafield is the structured environment that compliments my English ability. The teachers care and are like friends and I love the opportunities we have to explore scenic New Zealand.”

Sungmin Yoon
(South Korea)

Seafield

New Zealand Certificate in English Language - Academic (Level 4)*

*Programme pending approval

Duration 17 weeks

Campus Auckland

Our Level 4 English Language programme aims to provide students with the language competency in academic contexts which will enable their pathway to further tertiary study. It sets out to further advance the students' skills of speaking, listening, reading, writing and critical thinking and develop the students' confidence and study skills that will enable them to undertake independent learning at the tertiary level and pathway to further tertiary study at level 5, 6 and 7 levels.

Entry Requirements

- New Zealand Certificate in English Language (Applied) (Level 3) or equivalent
- Be 16 years old by the time the programme starts

What Will I Learn?

- Learn how to listen, read, write and speak in English in academic contexts
- Get the language and study skills to succeed in academic study
- Study five English for Academic Purposes Unit Standards and gain credits towards meeting University Entrance literacy requirements
- Learn in a fast and flexible 17 week programme
- English language scholarships available

What's Next?

Study Further

- NZSE Diploma in Business Level 5
- NZSE Diploma in IT Technical Support Level 5
- NZSE Certificate in Uni Prep Level 4
- Any other Level 5 diplomas in NZ institutes

“I feel I have benefited greatly from my studies with Seafield. My progress in grammatical skills, academic writing and conversational English has prepared me well for my future studies.”

Nanami Hayashi
(Japan)



General English

Our General English programme is designed for learners who wish to improve their English language skills at any level. Our courses are available from beginner to advanced with choices of intensive and standard learning. Our intensive class has our focused international English proficiency exam (LanguageCert ESOL) preparation class embedded.

All of the programmes below are offered at our central Auckland campus.

Intensive classes (with LanguageCert Preparation class embedded)	8.30am to 12.45pm 1.30pm to 2.30pm
Standard Daytime classes	8.30am to 12.45pm Monday to Friday
Standard Evening classes	5.00pm to 9.00pm Monday to Friday

IELTS Preparation

Our IELTS preparation programme is designed for learners who wish to improve their English language skills for higher level studies or work in English speaking environments.

LanguageCert (ESOL) Testing Centre



Seafield now offers LanguageCert International ESOL (English for Speakers of Other Languages) exams. LanguageCert is designed for non-native speakers of English worldwide wanting to provide documented evidence of their knowledge of English, for study or employment. We run B2 Communicator Test and C1 Expert Test regularly. Please contact us to find out about upcoming exam dates, how to apply for an exam or just ask for more information.

As an approved Test Centre we focus on exams that cater to International Students and Young Learners:

- LanguageCert International ESOL
- LanguageCert Young Learners ESOL
- Separate Written Exams (Listening, Reading and Writing) and Spoken Exams (Speaking), leading to two separate certificates
- Focus on communication skills, i.e. little exam-specific preparation required
- Grammar and Vocabulary integrated in the Listening, Reading and Writing sections and not examined separately
- Each candidate examined individually during Speaking, so they can perform at their best
- Speaking exam conducted by a qualified Interlocutor, who does not do the assessment, to guarantee impartiality
- Speaking session recorded and marked by qualified LanguageCert Examiners at a later stage, to ensure possibility of re-marking

Fast results and certificates issuing:

- Results and e-certificate 10 days after the exam
- Hard-copy certificate shortly after results release
- Life-long certificate validity
- Practice tests available on LanguageCert website for candidates and see what other support material is available
- LanguageCert IESOL exams are accepted by NZQA for the purpose of fulfilling English-language requirements for entry to programmes at levels 3 and above on the NQF (National Qualifications Framework).

Student Activities

From trips to beautiful places in New Zealand to some after class entertainment out with friends, experience New Zealand life while you're learning English at Seafield.



AUCKLAND CENTRAL CAMPUS

Level 2 and 3, 60 Federal Street
Auckland CBD,
New Zealand

AUCKLAND CAMPUSES

3033 Great North Road
New Lynn, Auckland
New Zealand

2171 Great North Road
Avondale, Auckland
New Zealand

5A Ryan Place
Manukau, Auckland
New Zealand

WAIKATO CAMPUS

850 Victoria Street
Hamilton Central, Hamilton
New Zealand

nzse.ac.nz

+64 9 827 6100 | study@nzse.ac.nz

seafield.ac.nz

+64 9 369 1906 | study@seafield.ac.nz